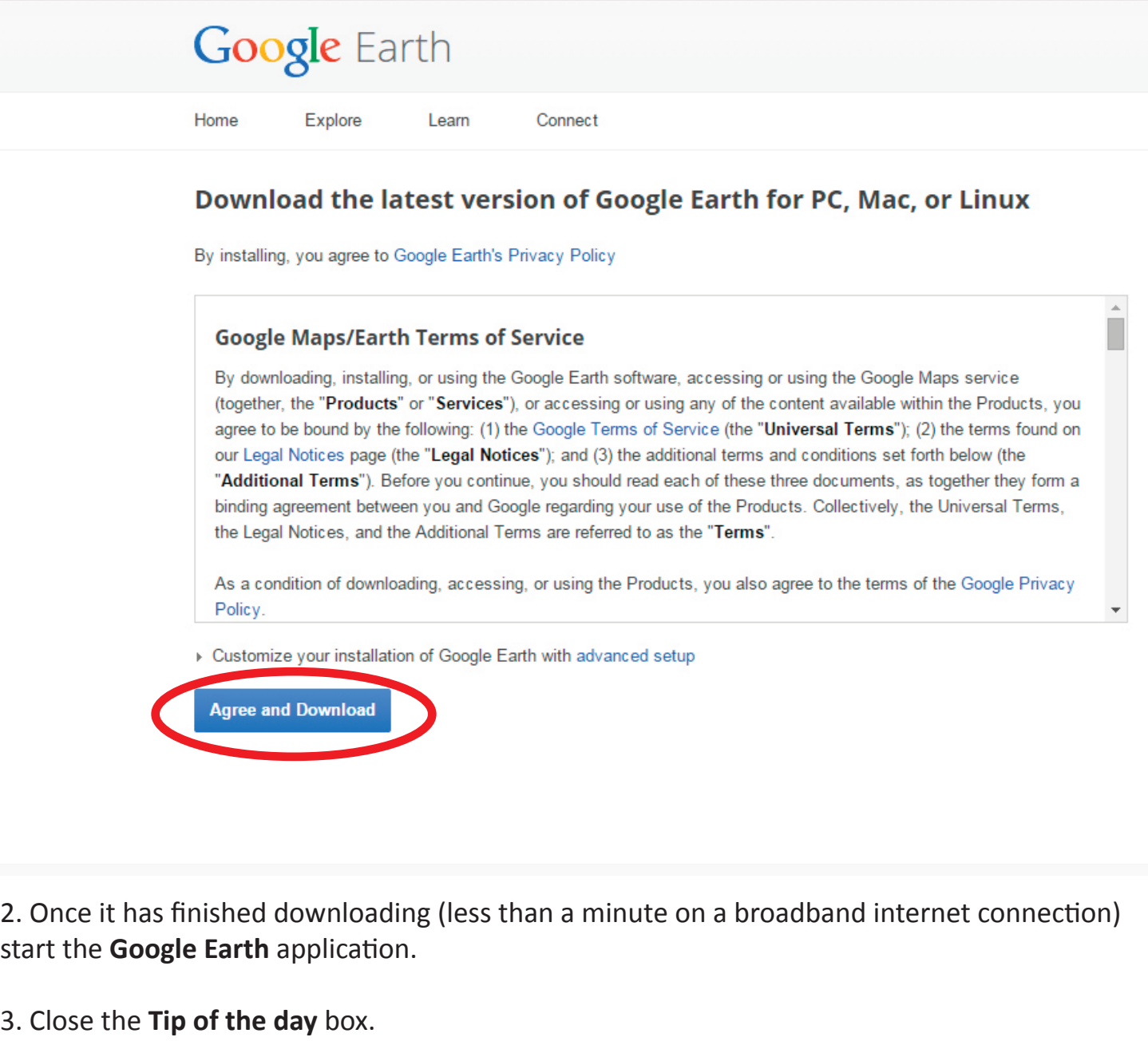


You can now keep track of all our NH Ospreys on your own version of **Google Earth**. [Check out our step-by-step instructions to find out how.](#)

Google Earth is free to download and use. Please follow these step by step instructions to get up and running with **Google Earth** on your computer, and link to the Osprey migration satellite tracking data.

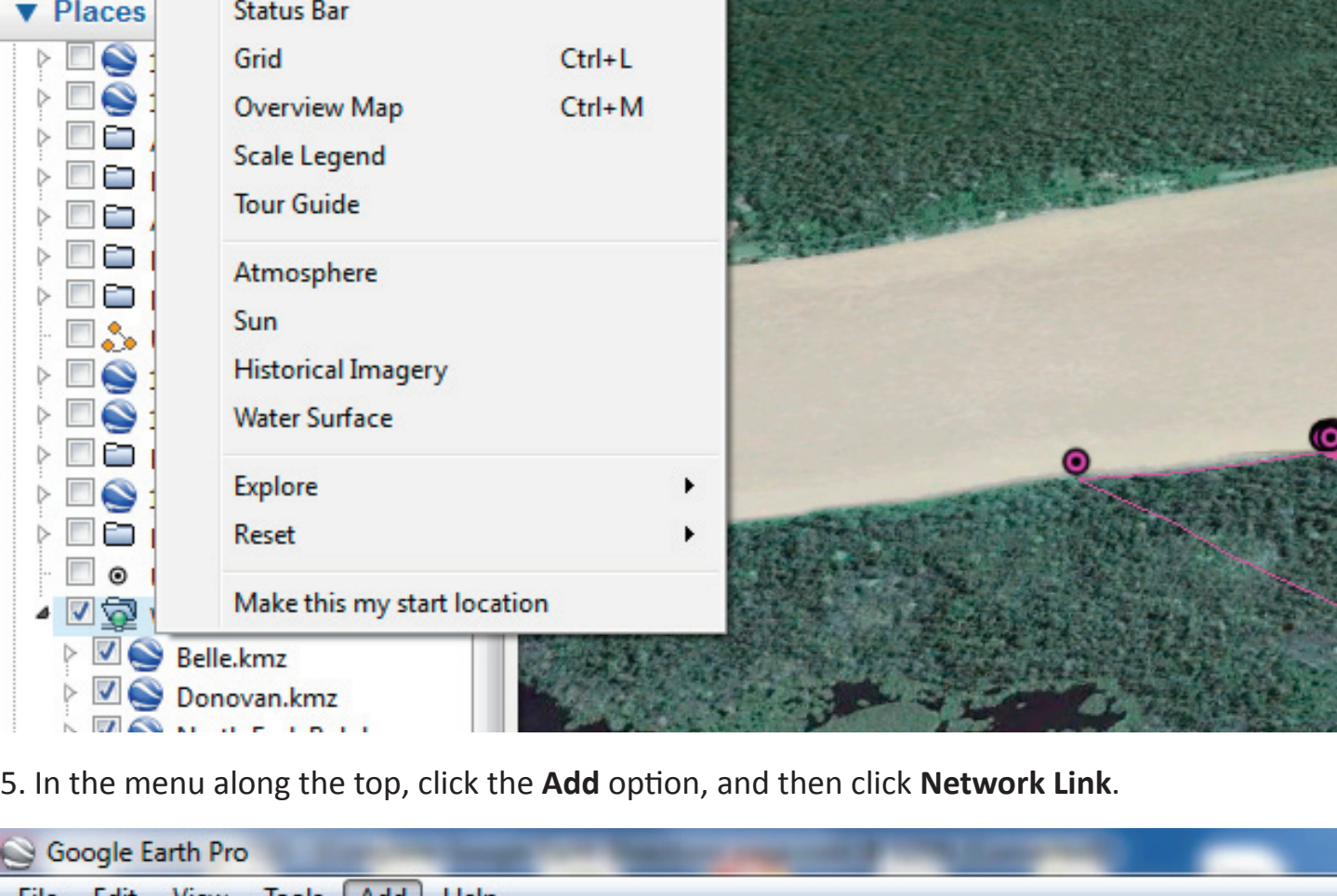
1. [Click Here](#) to download **Google Earth** to your computer. Click the **Agree and Download** button.



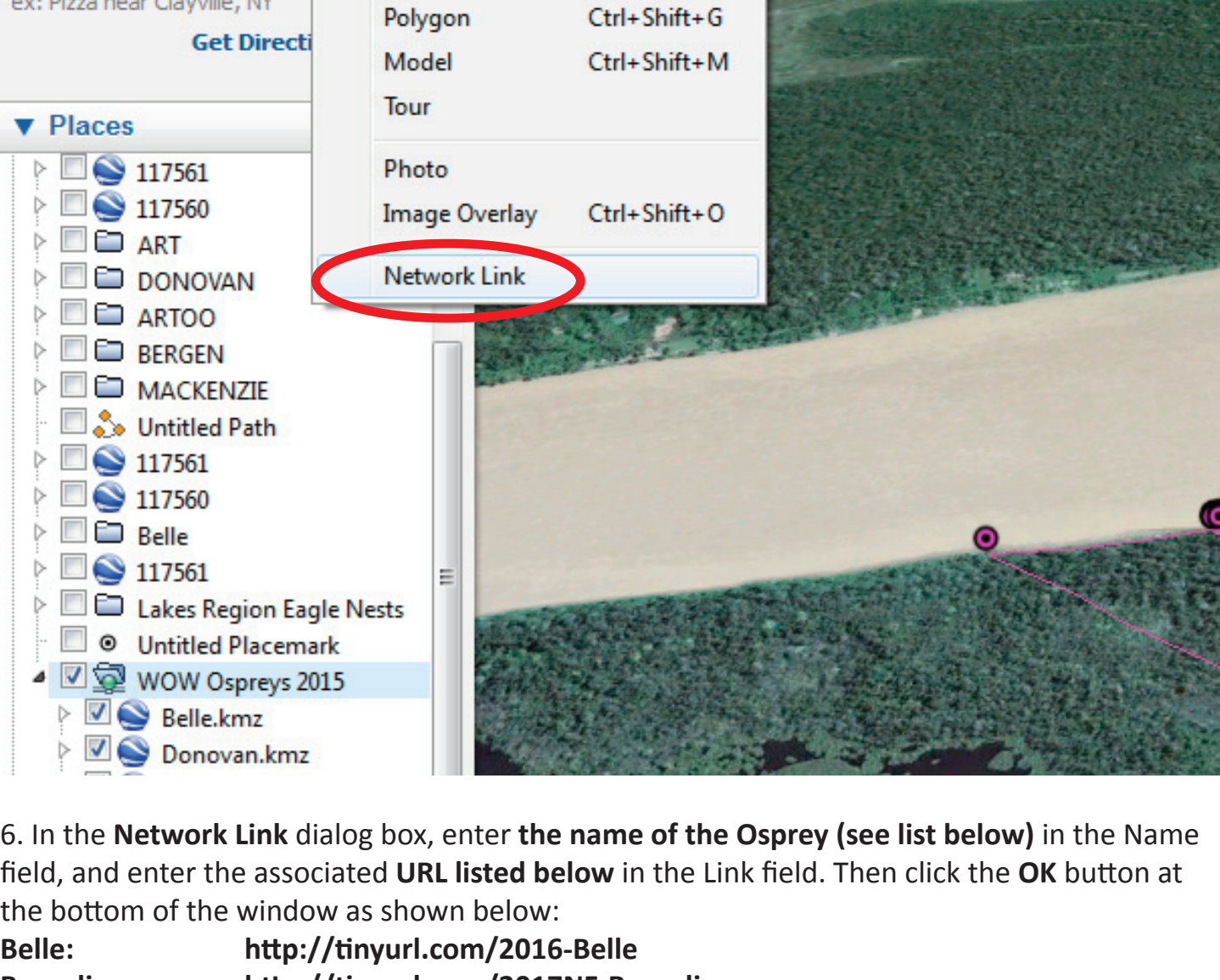
2. Once it has finished downloading (less than a minute on a broadband internet connection) start the **Google Earth** application.

3. Close the **Tip of the day** box.

4. In the menu along the top, click on the **View** option and make sure that the **Toolbar** and **Sidebar** options are checked.

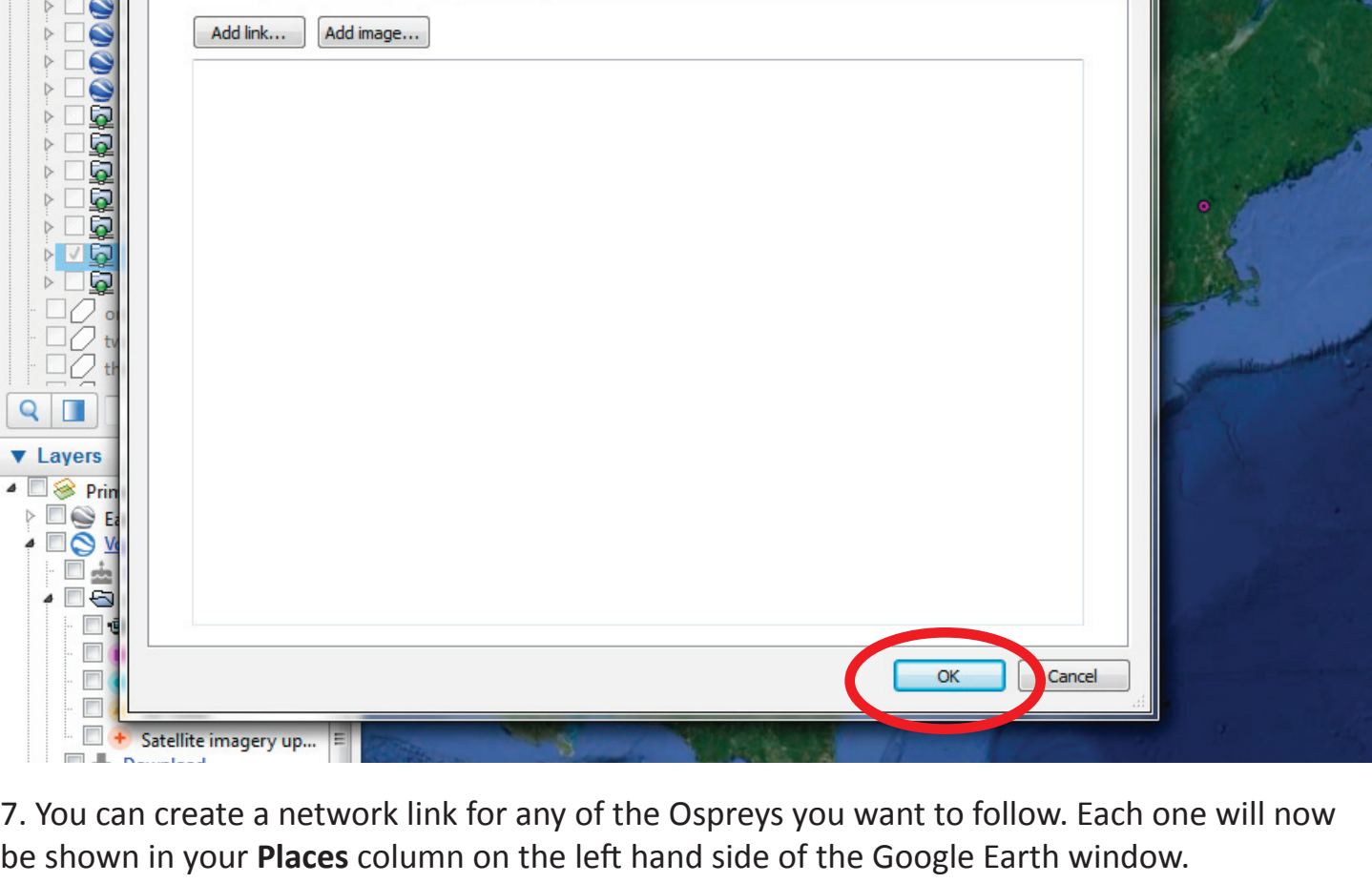


5. In the menu along the top, click the **Add** option, and then click **Network Link**.

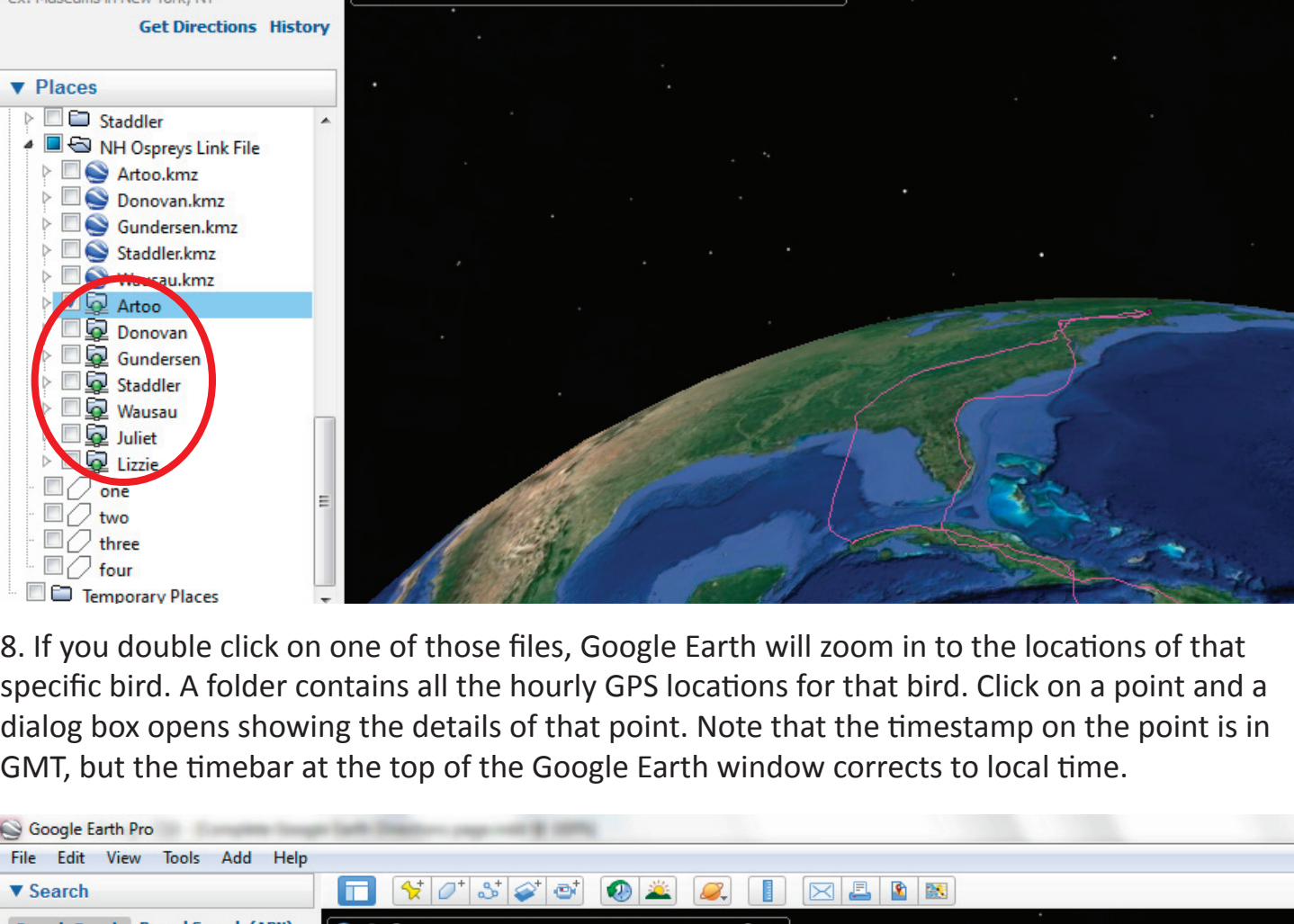


6. In the **Network Link** dialog box, enter the name of the Osprey (see list below) in the Name field, and enter the associated URL listed below in the Link field. Then click the **OK** button at the bottom of the window as shown below:

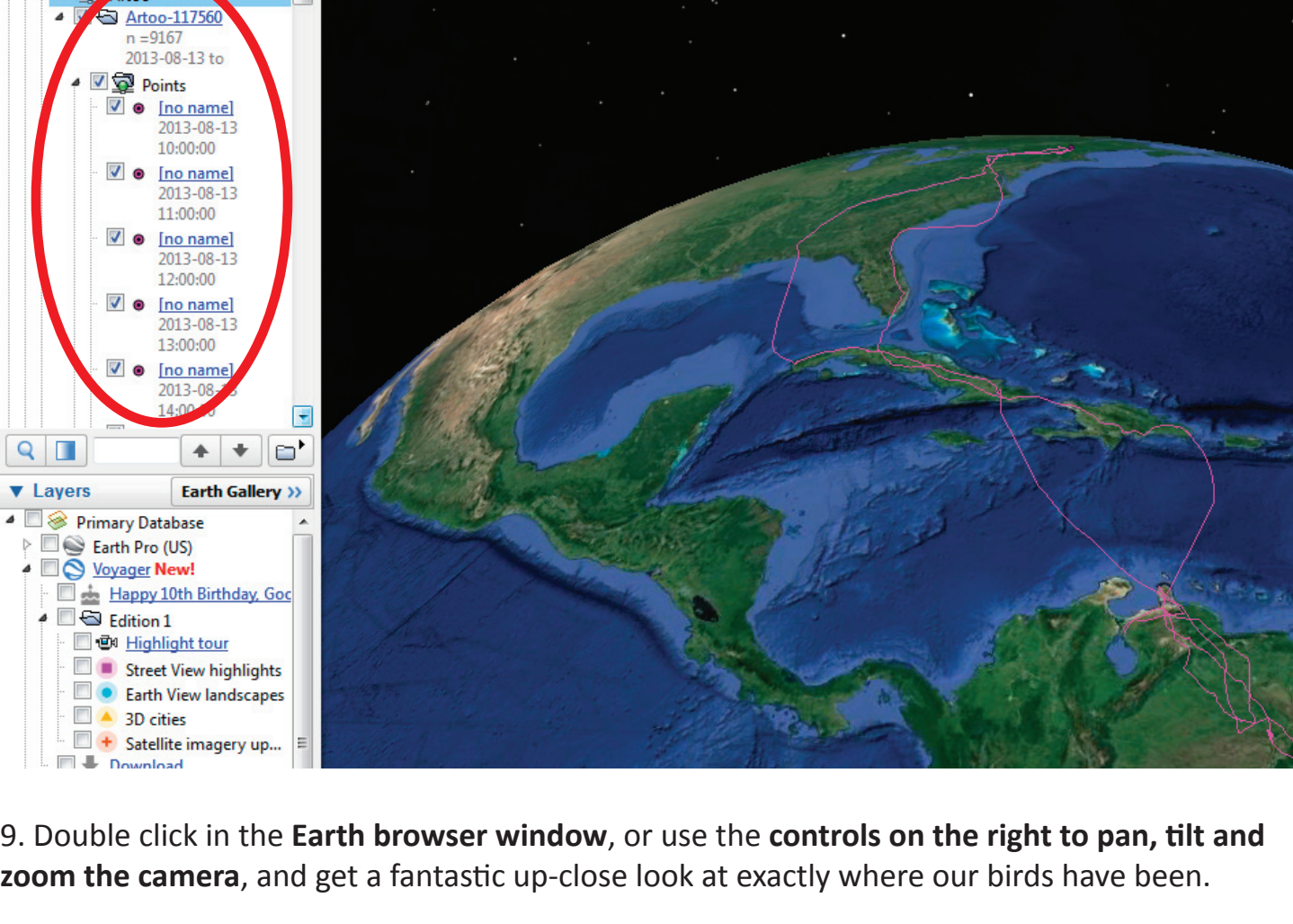
Belle:	http://tinyurl.com/2016-Belle
Borealis:	http://tinyurl.com/2017NF-Borealis
Daphne:	http://tinyurl.com/2016-Daphne
Flow:	http://tinyurl.com/2016-Flow
Hackett:	http://tinyurl.com/2016-Hackett
Holly:	http://tinyurl.com/2016-Holly
Jocelyn:	http://tinyurl.com/2016-Jocelyn
Layla:	http://tinyurl.com/2017-Layla
Leif:	http://tinyurl.com/2016-Leif
Nick:	http://tinyurl.com/2016-Nick
Rock:	http://tinyurl.com/2017-Rock
Shanawdithit:	http://tinyurl.com/2016-Shanawdithit
Staddler:	http://tinyurl.com/2016-Staddler
Tommy:	http://tinyurl.com/2017NF-Tommy
Trepassey:	http://tinyurl.com/2016-Trepassey
Virginia:	http://tinyurl.com/2016-Virginia
Wausau:	http://tinyurl.com/2016-Wausau



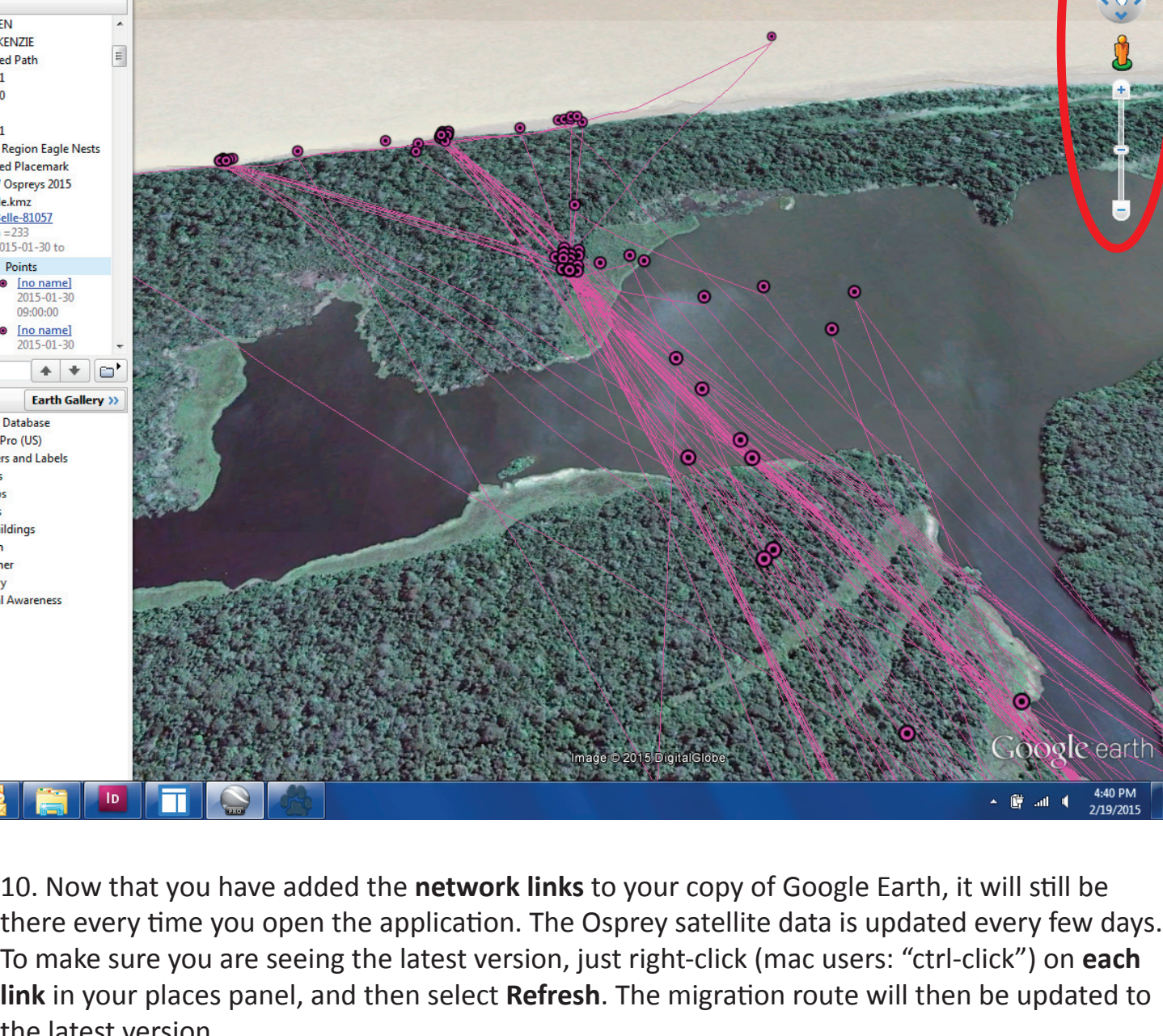
7. You can create a network link for any of the Ospreys you want to follow. Each one will now be shown in your **Places** column on the left hand side of the Google Earth window.



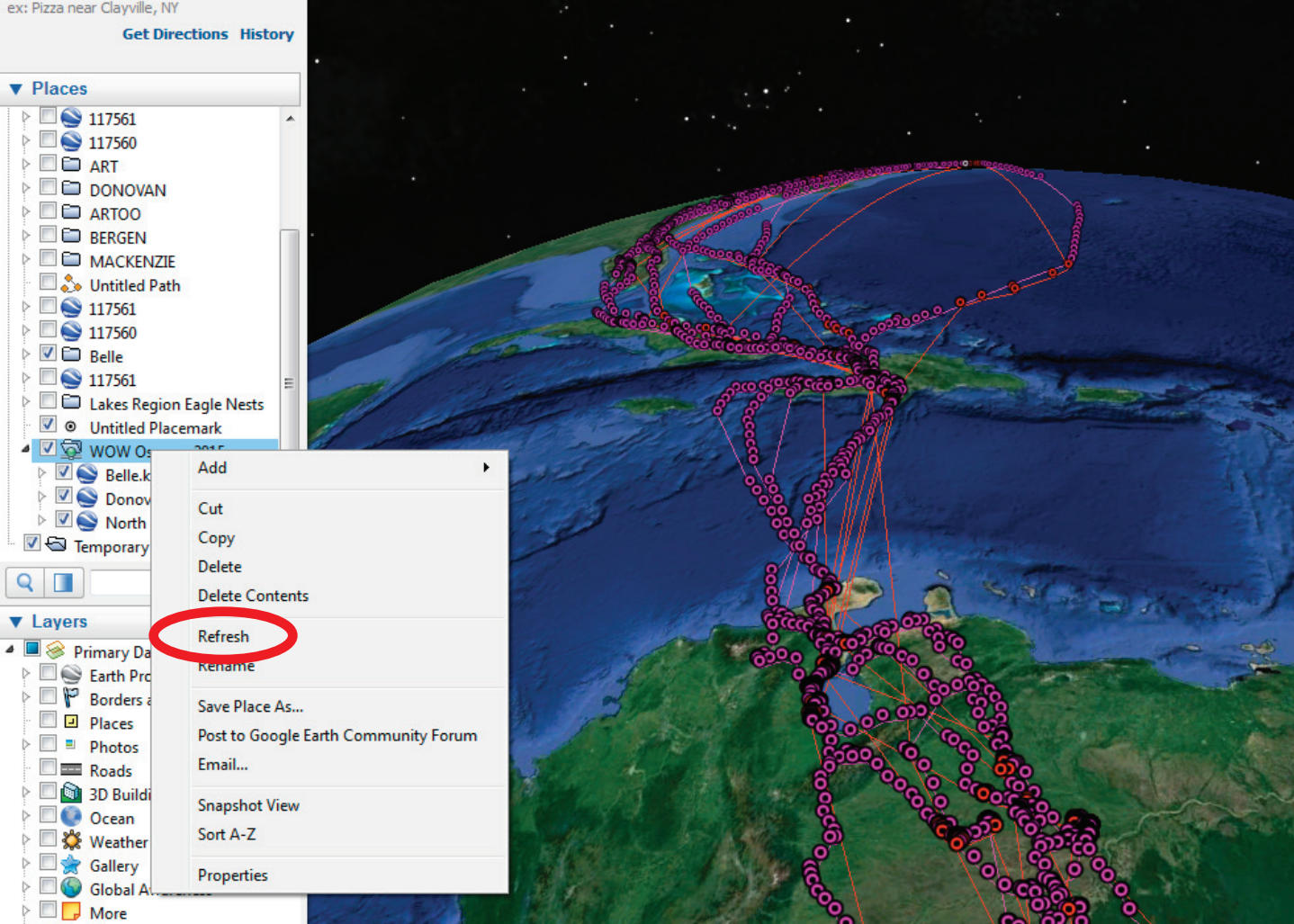
8. If you double click on one of those files, Google Earth will zoom in to the locations of that specific bird. A folder contains all the hourly GPS locations for that bird. Click on a point and a dialog box opens showing the details of that point. Note that the timestamp on the point is in GMT, but the timebar at the top of the Google Earth window corrects to local time.



9. Double click in the **Earth browser window**, or use the controls on the right to **pan, tilt and zoom the camera**, and get a fantastic up-close look at exactly where our birds have been.



10. Now that you have added the **network links** to your copy of Google Earth, it will still be there every time you open the application. The Osprey satellite data is updated every few days. To make sure you are seeing the latest version, just right-click (mac users: "ctrl-click") on **each link** in your places panel, and then select **Refresh**. The migration route will then be updated to the latest version.



11. Enjoy watching the amazing, detailed journeys of these birds as they migrate between North and South America.